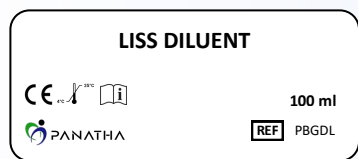
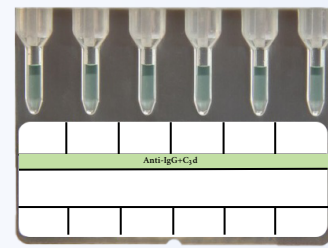
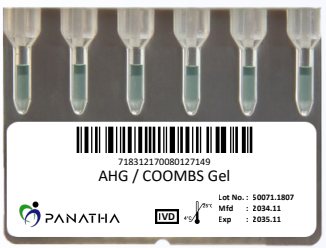
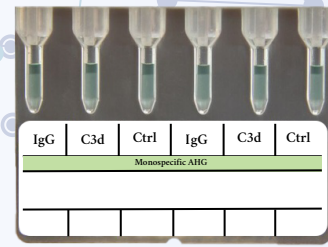
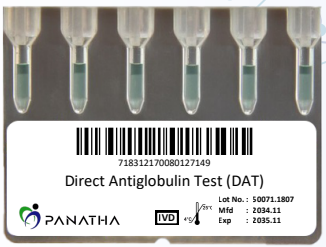
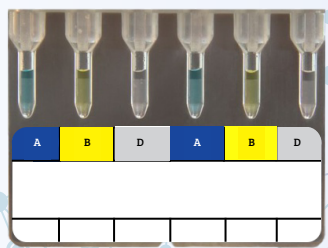
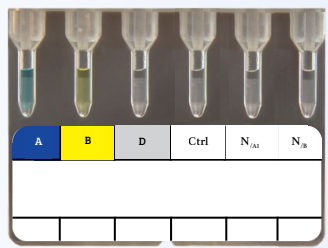




**DISTRIBUTION PERMIT MoH REPUBLIC OF INDONESIA :**

- AHG / COOMBS Gel : KEMENKES RI AKD 20209620008
- ABO Rho (D) Forward Reverse Grouping : KEMENKES RI AKD 20209620030

**Gel Card Product**



**ABO Rho (D) Forward & Reverse Grouping**

**Basic of technique**  
Determination of the antigen of the ABO and Rh (D) System (Rhesus Antigen) and determination of the complete reverse ABO group.

**Test per Card :** 1  
**Gel Clones**  
Anti-A : Monoclonal Anti A ( IgM Antibodies of Clone Birma-1)  
Anti-B : Monoclonal Anti B ( IgM Antibodies of Clone LB-2)  
Anti-D : Monoclonal Anti D ( IgM Antibodies of Clone RUM-1)  
Ctrl : Buffered / Control solution without Antibodies (control microtube)  
N : Buffered / Neutral solution without Antibodies (for reverse grouping test)  
**Presentation :** 2 x 12 cards

**ABO Rho (D) Forward Grouping**

**Basic of technique**  
Determination of the antigen of the ABO and Rh (D) System (Rhesus Antigen) and confirmation of the blood groups of the ABO and Rh (D) System.

**Test per Card :** 1  
**Gel Clones**  
Anti-A : Monoclonal Anti A ( IgM Antibodies of Clone Birma-1)  
Anti-B : Monoclonal Anti B ( IgM Antibodies of Clone LB-2)  
Anti-D : Monoclonal Anti D ( IgM Antibodies of Clone RUM-1)  
**Presentation :** 2 x 12 cards

**Direct Antiglobulin Test (DAT)**

**Basic of technique**  
Evaluation of positive Direct Coombs in Polyspecific Anti Human Globulin. it allows differentiating red blood cells sensitized in vivo by IgG type immunoglobulin Or the complement C3d fraction used monospesific Anti Human Globulin.

**Test per Card :** 2  
**Gel Clones**  
Anti IgG : Animal serum < 0,1 % Sodium azide, buffered low ionic strength solution (LISS) rabbit polyclonal anti-IgG  
Anti C3d : Monoclonal anti C3d antibodies.  
**Presentation :** 2 x 12 cards

**AHG / COOMBS Gel**

**Basic of technique**  
Indirect Coombs Test (ICT/IAT) and Direct Coombs Test (DCT/DAT). Indirect Coombs Test such us screening and identification of unexpected antibodies, crossmatching test and varian of the human red blood cell antigen typing. Direct Coombs Test (DCT/DAT) to detect the presence of IgG antibodies and/or complement sensitized to the surface of red blood cells

**Test per Card :** Depending on the test  
**Gel Clones**  
AHG : Animal serum < 0,1 % Sodium azide, buffered low ionic strength solution (LISS) with polyspecific Anti Human Globulin. mixture of rabbit polyclonal anti-IgG and monoclonal anti C3d antibodies.  
**Presentation :** 2 x 12 cards

**LISS Diluent**

**Basic of technique**  
For preparation of red blood cell suspensions used for gel card system.